

EG-UC5T Linear-Array Echoendoscope

Direction of View	45° Forward oblique
Field of View	140°
Depth of Field	3-100mm
Working Channel Diameter	4.0 mm
Insertion Diameter	12.6 mm
Distal End Diameter	13.9 mm
Tip Deflection Up & Down	130°, 130°
Tip Deflection Left & right	120°, 120°
Working length	1250
Total length	1550
Scanning Mode	CD,CW,PW,B,M,THI
Scanning System	Longitude, Electronic, Convex
Scanning Angle	150°
Frequency	4-12MHz
Contact method	Direct contact

S60 Ultrasound System

Scanning Method	Electronic
Probe Type	360° Radial, Linear, Sector, Convex, Trapezoidal Display
Scanning Mode	B-Mode, M-Mode, Power Doppler, Color Doppler, Dynamic Flow, PW
Special Mode	Elasto, Contrast Enhancement, THI
Adaptive Multi-Beam Imaging	Available
Spatial Compound Technology	Available
Monitor	21.5 Inch with Flexible arm
Touch Screen	13.3 Inch
Wireless Wifi	Available
Frequency	1-17Mhz
Outputs	DVI, BNC, Y/C
Internal Storage	1TB. For still image, Video recording

Image Processor

	HD-510/HD-550
Video Output	DVI, SDI, VGA, S-video, CVB
Patient Data	≥10,000 records
Data Management)	500GB built-in workstation, USB, DICOM (HD-550 only)
Image Enhancement	Structure/Edge/Colour/Contrast
Others	Auto white balance, digital zoom, IRIS, AGC

Light Source

	VLS-50D/VLS-50T	VLS-55T/VLS-55Q
Light	2-LED	4-LED
Light Mode	WL, SFI (VLS-50T only), VIST	WL, SFI, VIST
Brightness	Auto/Manual	
Service Time	10,000 hours (Continuous use)	
Scope Connection	One-Step Connection, Hot-plugging	

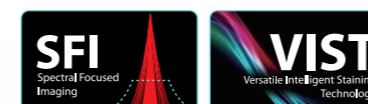


SonoScape Medical Corp.
 2F, 12th Building, Shenzhen Software Park Phase II, Keji Middle
 2nd Road, Shenzhen, China
 Tel: +86-755-26722890 Fax: +86-755-26722850
 Email: market@sonoscape.net www.sonoscape.com

ISO 13485 0197

PUSHING THE BOUNDARIES OF THERAPEUTIC EXCELLENCE

EG-UC5T, Linear-Array Echoendoscope








E-EGUC5T20201112

Reaping the benefits of decades of ultrasound technology know-how, combined with our endorsed endoscope design, EG-UC5T widens staging and therapeutic options, fulfils and exceeds the most sought-after requirement from your medical team, levelling up the vision and achievement behind the wall of the GI tract.

All Rounder

There is never a right or wrong echoendoscope but the one fits your clinical needs. The versatile EG-UC5T makes the choice easier: gain great freedom in the selection of accessories, at no expenses of scope handling.

-  4.0-mm Instrument channel
-  12.6-mm Insertion diameter
-  Short rigid distal end and small bending radius
-  Scanning angle amounts to 150°
-  4-12MHz acoustic frequency







A unique cut-out design on the back of the elevator is predisposed. This facilitates the brushing of the recess area through out and could decrease the risk of cross-contamination.



Imaging Leader



On top of SonoScape's flagship High-Definition endoscopy systems, get access to one of the finest ultrasound scanner worldwide, well-known amongst your radiology colleagues.

-  All common modalities and Doppler technology.
-  Contrast-Enhanced Harmonic EUS and EUS elastography.
-  SonoScape's premium ultrasound processor S60 generates top-quality images, leading to a more accurate characterisation of GI and pancreaticobiliary tumours.
-  The transducer of the latest generation comes with an improved electromagnetic shielding technology, which lessens the interference and reduces image artifacts.



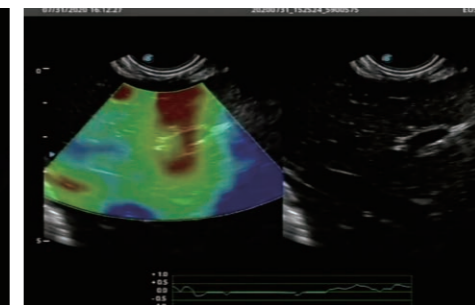
Details Seeker

The EG-UC5T was conceived to offer you great comfort in procedures in thoughtful details.

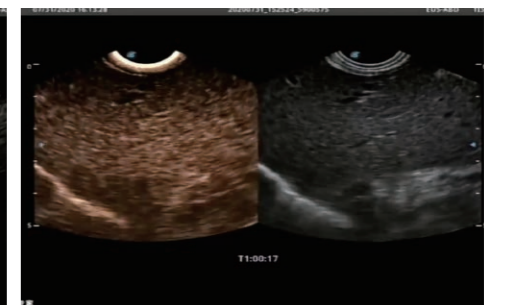
-  A handle located further away from the ultrasound cable cuts down considerably the weight in your hands.
-  The four fully customisable buttons allow an easy image control.



EUS-FNA



EUS Elastography



Contrast-Enhanced Harmonic EUS